

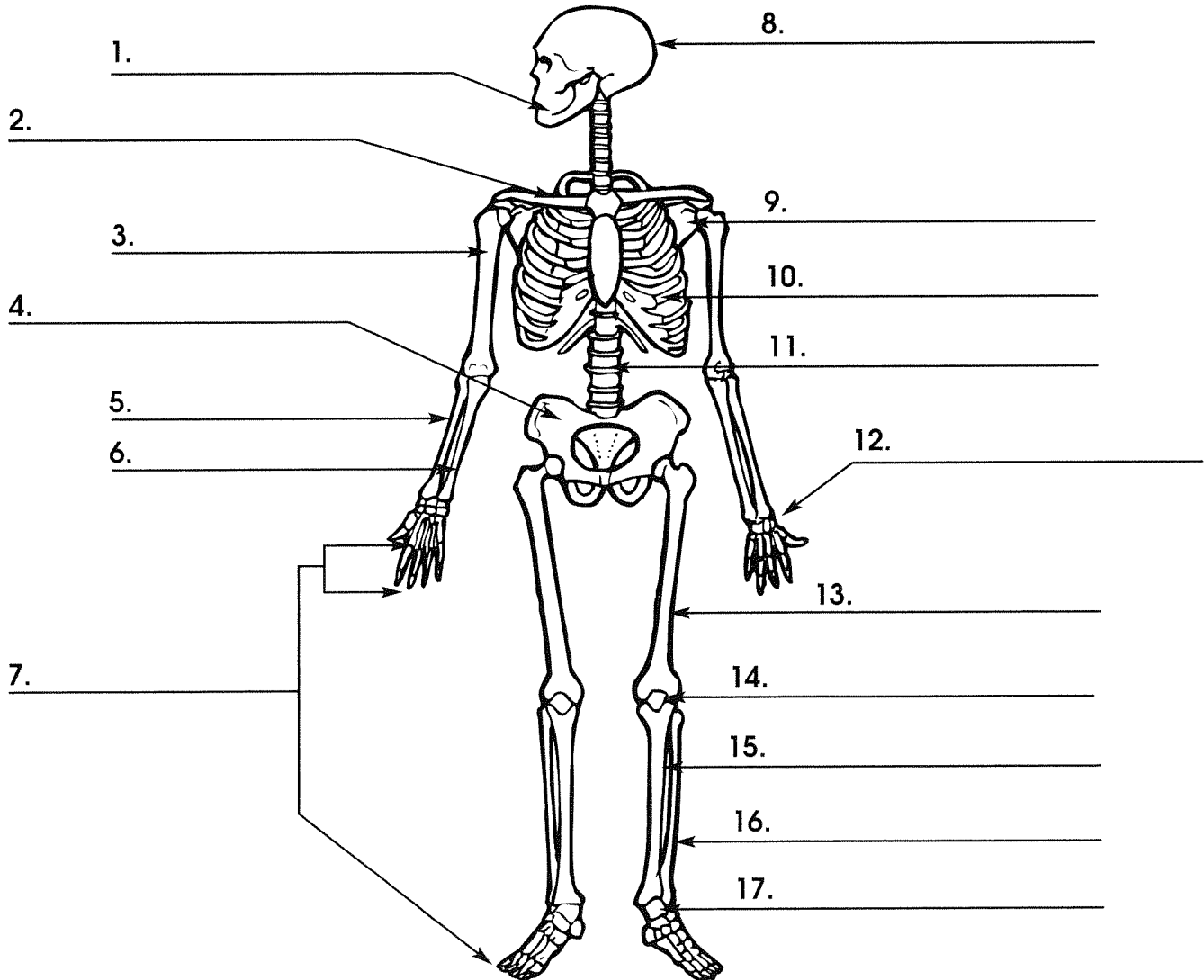
Name \_\_\_\_\_

# The Framework of the Body

Label the major bones of the body in the diagram of the skeletal system.

**Word Bank**

	<b>Scientific Name</b>	<b>(Common Name)</b>
cranium (skull)	clavicle (collarbone)	radius (lower arm bone)
carpals (wrist bones)	patella (kneecap)	vertebrae (backbone)
pelvis (hipbone)	scapula (shoulder blade)	femur (thighbone)
tarsals (ankle bones)	fibula (lower leg bone)	ulna (lower arm bone)
tibia (shinbone)	rib cage (ribs)	mandible (jawbone)
phalanges (fingers and toes)		humerus (upper arm bone)



# Awesome Anatomy

## The Skeleton

### Instructions

#### Day 1 (Minimum Requirement)

Use a pencil and label the diagram with the common name of the bones. Be sure to place the label in the correct spot.

---

#### Day 2 (Minimum Requirement)

Label the diagram with the scientific name of the bone. Be sure to write neatly and spell each word correctly.