



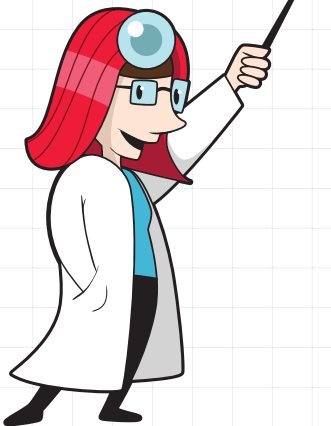
The BONE ZONE

Legs

Write the correct label for each bone in the given box. Refer to the clipboard for the bones' names.

- A. Femur
- B. Patella (knee cap)
- C. Fibula
- D. Tibia (shin bone)
- E. Tarsal bones
- F. Metatarsals
- G. Phalanges (toe bones)

FACT: The femur is the largest and strongest bone in the human body!



A —

B —

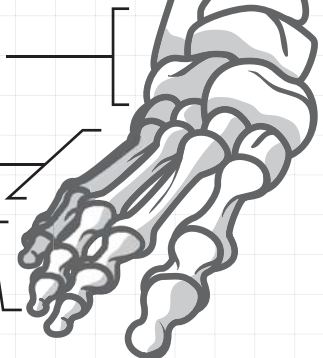
C —

D —

E —

F —

G —



Awesome Anatomy Bones of the Leg Instructions

Day 1 (Minimum Requirement)

Use a pencil and label the different bones in the leg. Be sure to write neatly and spell each area correctly.

Day 2 (Minimum Requirement)

Use crayons to color in the different bones of the leg. Be sure to use a different color for each different part of the leg.