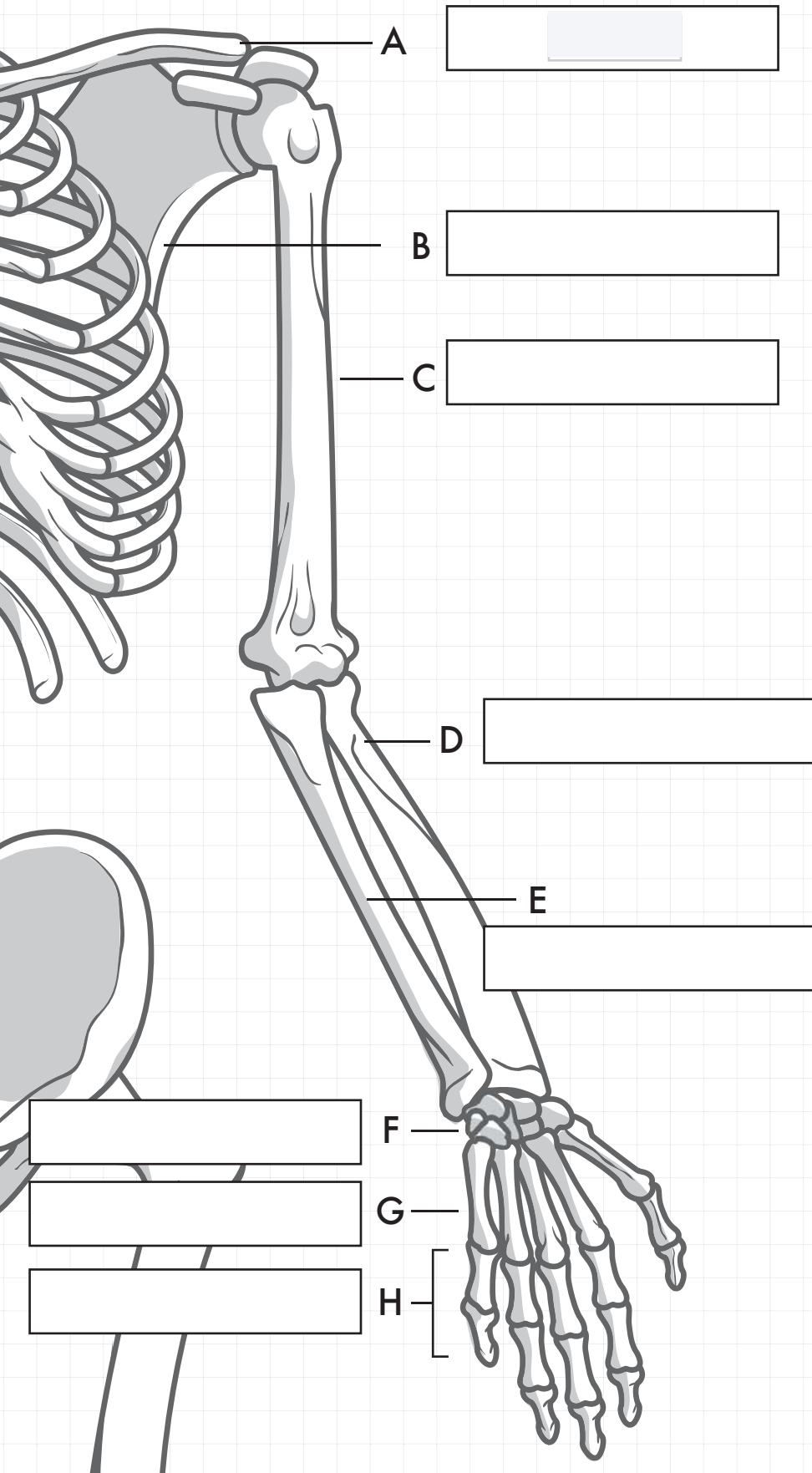


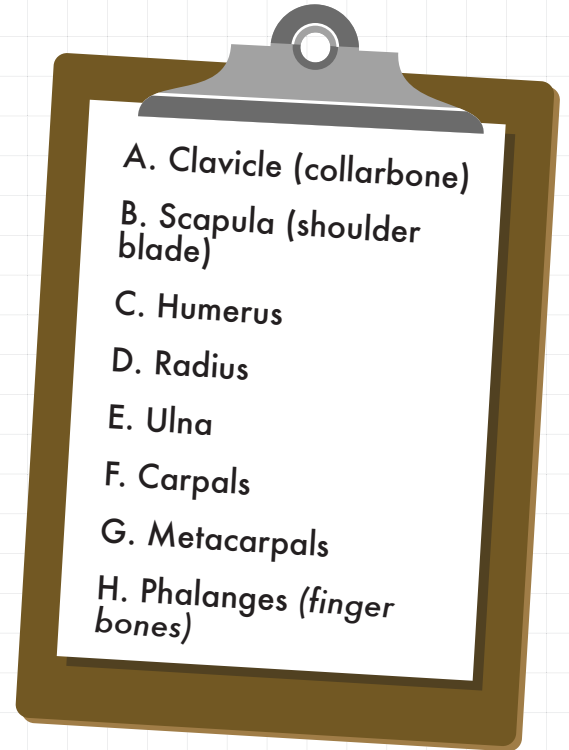


the BONE ZONE

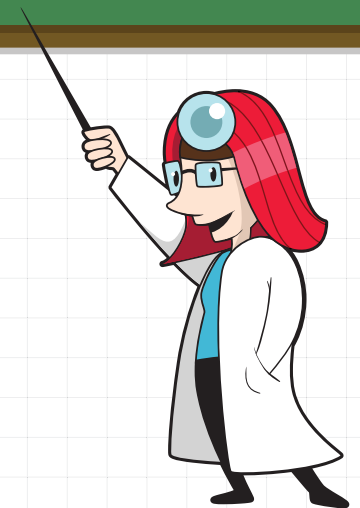
Arms



Write the correct label for each bone in the given box. Refer to the clipboard for the bones' names.



FACT: Your forearm (the segment from your elbow to your wrist) is the same length as your foot.



Awesome Anatomy Bones of the Arm Instructions

Day 1 (Minimum Requirement)

Use crayons to color in the different bones in the arm. Use a different color for each bone in the arm.

Day 2 (Minimum Requirement)

Label the bones of the arm. Be sure to write neatly and check your spelling twice.

Extra Credit Question:

What do you notice about the structure of the arm compared with the structure of the leg? How are they similar? How are they different?