

Bowling Score Sheet

	1	2	3	4	5	6	7	8	9	10
ROUND 1										
ROUND 2										
ROUND 3										

If you knock down any pins with the first roll, mark the frame with that number.



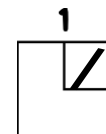
The number of pins is equal to the number of points.

If you knock down any pins with the second roll, mark the frame with that number.



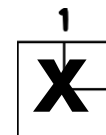
Add this number of pins to the first ball to get your total frame points.

If you knock down all the pins with the second roll, mark the frame with a diagonal line / in the top corner.



SPARE. This is equal to the pins plus the total score of the next roll.

If you knock down all the pins with the first roll, mark the frame with an X in the middle.



STRIKE. This is equal to the pins plus the total score of the next two rolls.